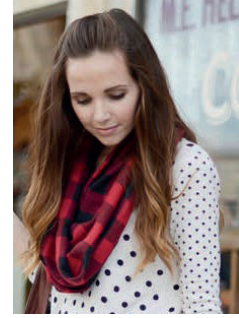


## Activity 19 - Creating Accessories for that Perfect Outfit

**Project Outcome:**

Create jewelry or scarf to accessorize an outfit.

When you are sewing an item, think how neat it would be to have a coordinating accessory when you wear what you have made. This could be a scarf, head band, braided necklace, belt or other item. In this activity you will see examples of accessories in which you might be interested in making. You will also be given instructions for some of these to make that outfit special.

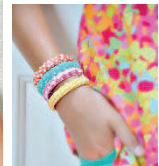


### To Get Started:

Look in your closet and find outfits that you would love to accessorize with something you can make. **Make a list of a few of those items and then list some colors of fabric that would be great to use to make accessories.** (Don't worry about identifying the type of accessory you want to make. You can identify that later.)

Description of Outfit (include color and patterns)	Description of colors and/or type of design of fabric that would go great with each item.
1.	
2.	
3.	

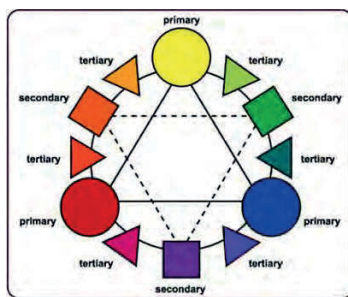
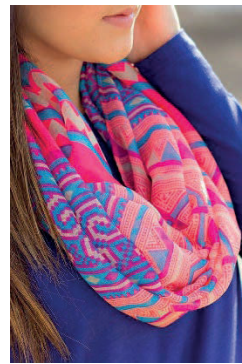
### Considerations when Accessorizing Outfits



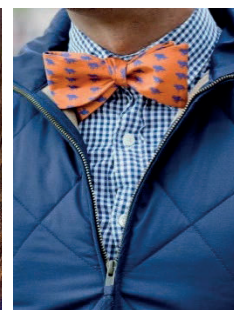
Accessories can give some pizzazz to that basic outfit. They really can give outfits that WOW look, using the same outfit with different accessories. This is

a great way to get the most mileage from your clothes – one outfit turns into a variety of looks. The following tips will help you as you think about what you would want to make to accessorize your outfits.

**1. Use your accessories to convey your personality!!** No matter what your accessory style, the goal is to add variety, interest and beauty. Think about your fashion personality (Review Activity 5 in Level 1 to identify your fashion personality.) You may be more of a natural person or perhaps you are dramatic. Your accessories should reflect your style. This is so important, and it's also so much fun.



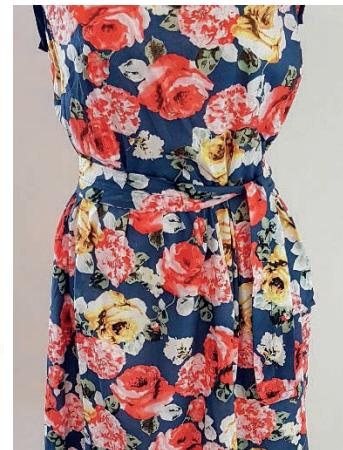
Analogous



Complementary

Use the basics of the color wheel when determining your fabric. Primary and secondary colors that are side by side on the wheel are analogous to each other. They work very well together when they are matched on the same level of lightness or darkness.

If you want to make a big fashion statement, choose primary and secondary colors that are opposite of each other on the wheel. These are *complementary* colors. Pairing these colors is bold and adventurous, and some shades don't look as good together as others. Don't be afraid to mix patterns. Try repeating colors and designs in your outfit. Experiment to find which colors work best for you.





**5. Hair accessories** offer an easy way to show off your personal style. They can be a simple fabric flower attached to a hair clip, head band or complete hair scarf.

**To Do:** Look at the following hair accessories and mark the ones you would wear. Describe what colors and/or fabric design you would use to make those you chose.



\_\_\_\_ Yes \_\_\_\_ No



\_\_\_\_ Yes \_\_\_\_ No



\_\_\_\_ Yes \_\_\_\_ No

Fabrics you would use:

---



---



\_\_\_\_ Yes \_\_\_\_ No



\_\_\_\_ Yes \_\_\_\_ No



\_\_\_\_ Yes \_\_\_\_ No

Fabrics you would use:

---



---

**6. Don't Forget the Scarf.** No, they're not just for the cold weather. If you've got a scarf on, just like a statement necklace, your look is instantly elevated and eye catching. Scarves tend to accentuate an outfit, adding a surprise element of cohesiveness. **The types of scarves you can make are endless!!!**

Mark which of the following scarves you would make.



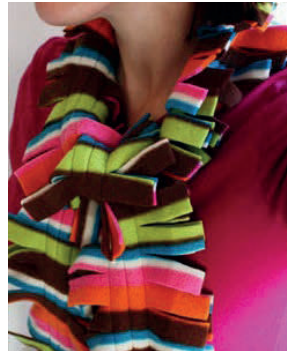
Infinity Scarf

☐ Yes ☐ No



Gauze Scarf

☐ Yes ☐ No



Fleece

☐ Yes ☐ No



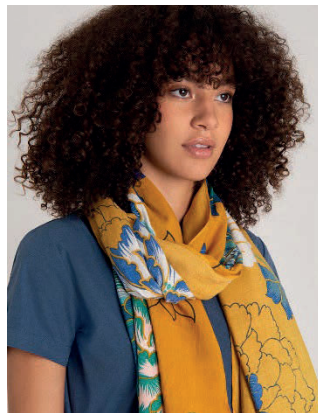
Gaiter (knit fabric)

☐ Yes ☐ No



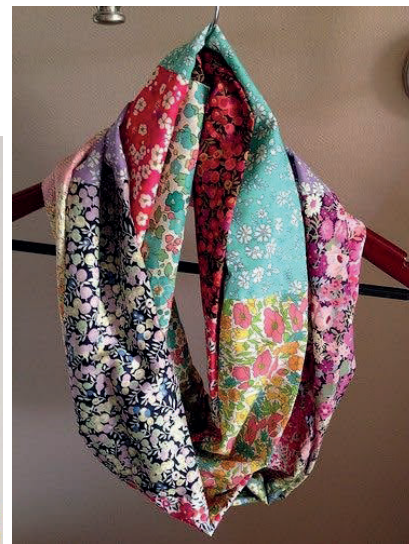
Animal Print with Tassels

☐ Yes ☐ No



Extra Long Scarf

☐ Yes ☐ No



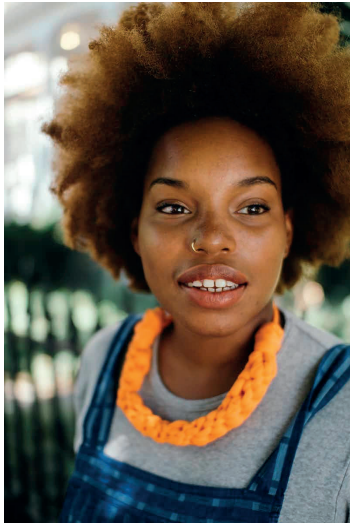
Fabric Infinity Scarf

☐ Yes ☐ No



## 7. Additional Accessories that will Enhance Outfits

There are many accessories you can make from coordinating fabric to enhance an outfit. You are only limited by your imagination! Examine the following examples of necklaces, bracelets, and purses that are relatively easy to make and will really add pizzazz to your clothes! If you are interested in making any of these accessories you can go online and find instructions easily.

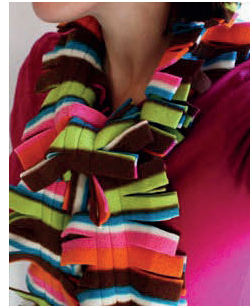


**To Do:** Now that you have explored the variety of accessories that you can make to enhance an outfit, go back to the very first list you made of outfits you have that need to be accessorized. Select an accessory that you can and will make. Here are instructions for a few of these accessories.

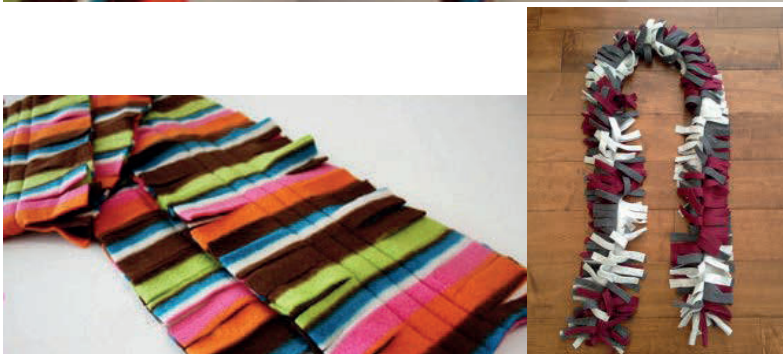
### Fleece Scarf

#### Supplies needed:

- 1/4 yard of patterned fleece
- 1/4 yard of coordinating solid color fleece
- Clear ruler
- Fabric pencil/pen (optional)



1. Cut each piece of fleece 55 inches long and 6 inches wide.
2. Pin the two pieces together.
3. Sew three rows of stitches that are 1/2 inch apart down the middle of the 55-inch length. (You may want to use a disappearing pen to mark your sewing lines.)
4. Cut into the stitching line from each side with cuts 1/2 inch apart. Hint: place your ruler over the stitching so you won't cut through your stitching.



Here's an example that is made by sewing only one row of stitching down the middle.

## Scrunchies

Supplies needed:

- 3.5 x 21-inch fabric strip
- 1/4-inch elastic trimmed to 6-7 inches

See close up views at:

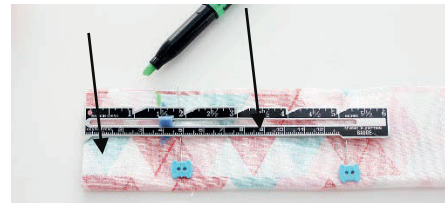
[www.positivelysplendid.com/scrunchie-pattern](http://www.positivelysplendid.com/scrunchie-pattern)



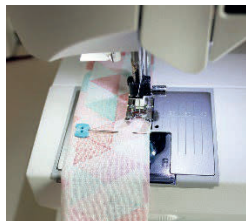
1. Fold the fabric strip in half lengthwise, right sides facing. Press. Pin along the long raw edges.



2. Make a small mark 1 1/2 inches from each of the top left and right corners of the pinned piece.



3. Starting at the mark on the left-hand side, stitch using a 1/4-inch seam allowance along the pinned edge of the fabric piece, stopping at the mark on the opposite side.



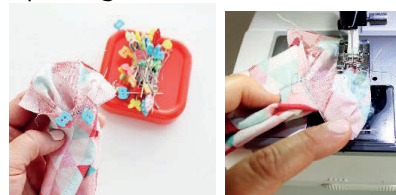
4. Secure a large safety pin through one open end of the piece and use it to turn the tube right-side out.



5. Fold the tube in half and carefully align the open top and bottom edges.



6. Pin these edges together and then stitch them with a 1/4-inch seam allowance to secure, as seen below. You will have a fabric tube with a 3-inch opening.



7. Secure the safety pin through one end of the elastic piece. Thread the elastic through the open seam and all the way around the fabric ring. Remove the safety pin and overlap the raw ends of the elastic, stitching them together.



8. Pinch the opening closed so that the side seams are aligned, as shown. Pin the opening shut. Edge stitch 1/8 inch from the edge of the opening to close.

