

# Tennessee 4-H Goat Project

*Advanced*







## BREEDS

Outcome: Identify the advantages and disadvantages of the following major breeds.



### EXPLORE: Step Out Activity

Put an X in the box for each breed that has an advantage for the marketable product.

	Milk Production	Fiber	Meat Production
Boer			
Alpine			
Lamancha			
Spanish			
Cashmere			
Tennessee Fainting			
Nubian			
Angora			
Toggenburg			

To learn more about these breeds, visit: <https://breeds.okstate.edu/goats/>



### EXPAND & APPLY

What skills did you learn? How does this relate to every day life? How can you use this knowledge in the future?





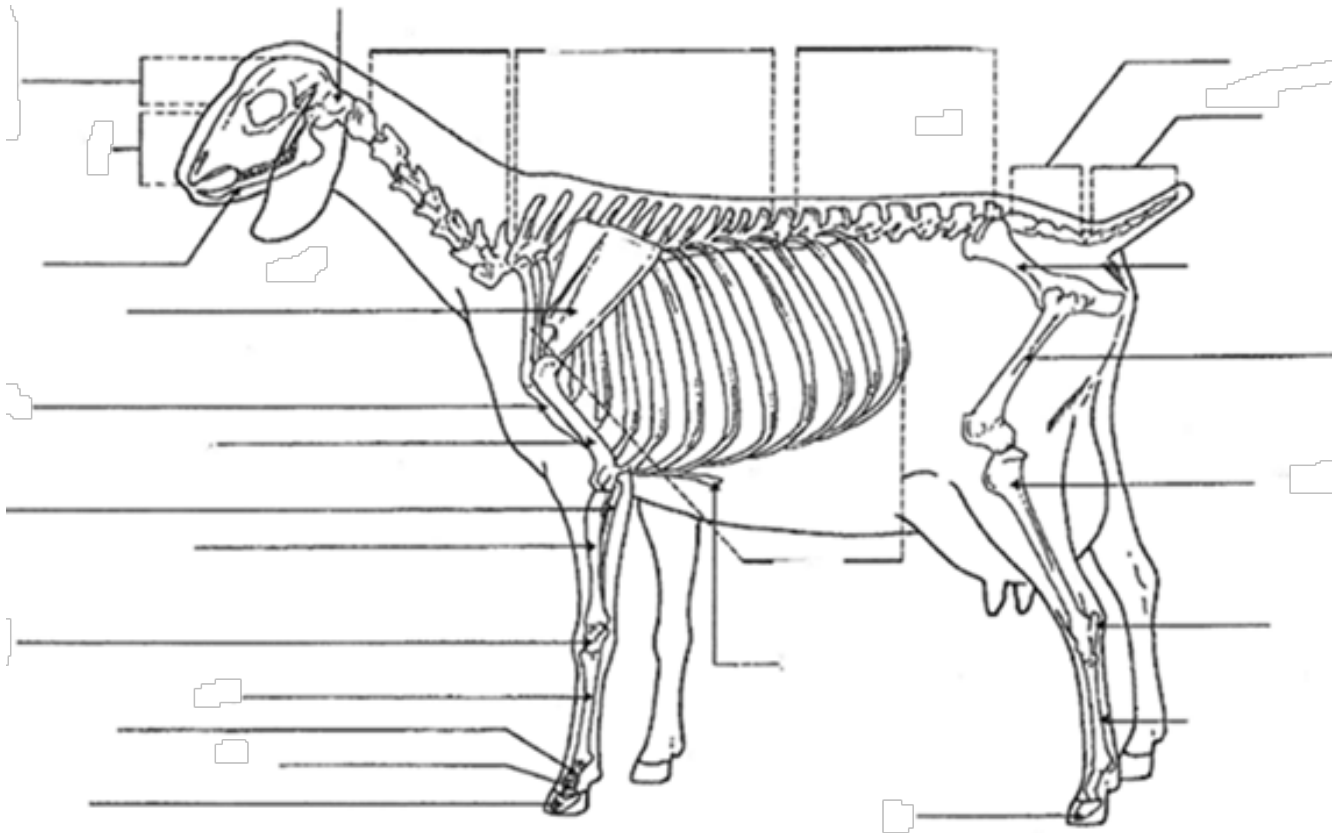
## EXTERNAL AND SKELETAL PARTS

*Outcome: Learn to identify and label the skeletal parts of the goat.*



### EXPLORE: Step Out Activity

Label all 27 skeletal parts of the goat:



To learn more about the goat skeletal system and to practice, visit:

<https://afs.ca.uky.edu/livestock/goat/skeletal>



### EXPAND & APPLY

What skills did you learn? How does this relate to every day life? How can you use this knowledge in the future?





*Outcome: Develop an equipment inventory for a goat herd.*

**Develop an equipment inventory for either a commercial or purebred herd.**

 **EXPAND & APPLY**

**What skills did you learn? How does this relate to every day life? How can you use this knowledge in the future?**





## NUTRITION AND FEEDING

*Outcome: Complete Pearson-Square ration formulation with feedstuffs*



### EXPLORE: Step Out Activity

Learn more about the Pearson-Square method.

Go to the following link to learn more about the Pearson Square method:

<https://utia.tennessee.edu/ansc/wp-content/uploads/sites/7/2020/07/BeefFeedstuffsActivityPacket.pdf>

Using Pearson's Square, determine how many pounds of each feed are needed to formulate the feed ration. Round units following decimals to the nearest tenth.

Formulate 500 lbs. of a 21% CP ration using Soybean Meal (44% CP) and Corn (9% CP).

How many pounds of soybean meal will be used?

How many pounds of corn will be used?



### EXPAND & APPLY

What skills did you learn? How does this relate to every day life? How can you use this knowledge in the future?



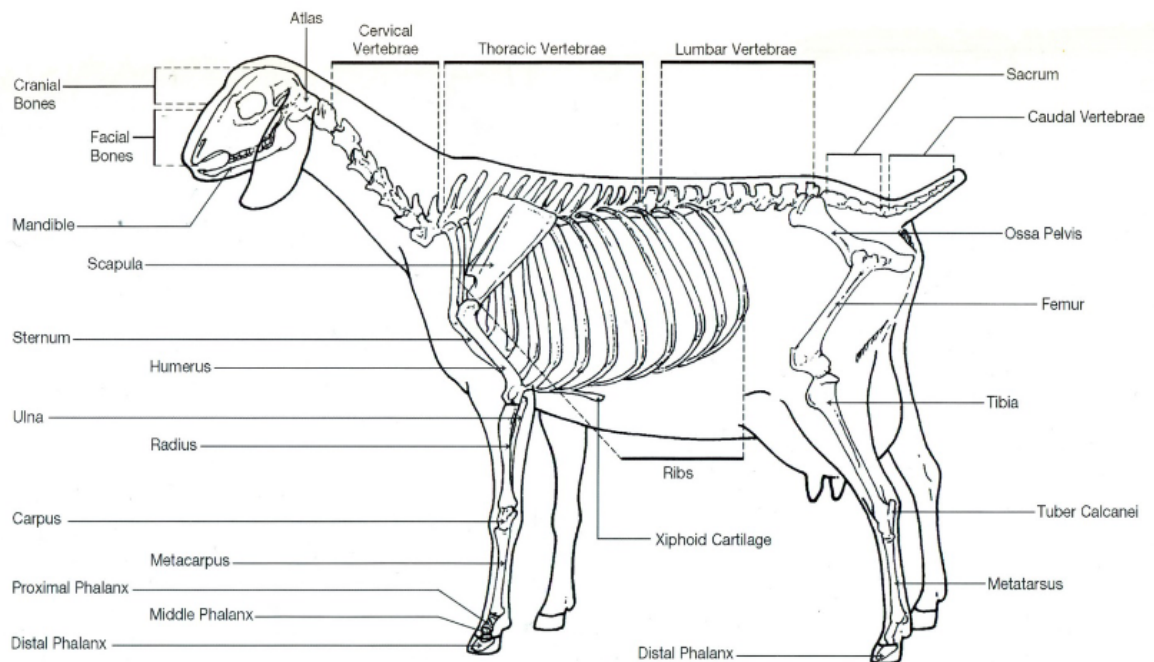


## *Activity Answers*

### *Activity 1*

	Milk Production	Fiber	Meat Production
Boer			X
Alpine	X		
Lamancha	X		
Spanish			X
Cashmere		X	
Tennessee Fainting			X
Nubian	X		
Angora		X	
Toggenburg	X		

### *Activity 2*







### Activity Answers

#### Activity 4

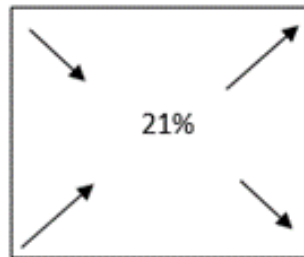
#### Pearson's Square Problems

**Directions:** Using Pearson's Square, determine how many pounds of each feed are needed to formulate the feed ration. Show ALL work! Round units following decimals to the nearest tenth.

Formulate 500 lbs of a 21% CP ration using Soybean Meal (44% CP) and Corn (9% CP).

Soybean Meal 44%

Corn 9%



12 parts  
Soybean Meal

23 parts Corn  
35 Total Parts

How many pounds of soybean meal will be used?

**12 parts Soybean Meal / 35 Total Parts = .34 parts from soybean meal**

**.34 parts from soybean meal x 500 lb ration = 170 lbs soybean meal needed**

How many pounds of corn will be used?

**23 parts Corn / 35 Total Parts = .66 parts from corn**

**.66 parts from corn x 500 lb ration = 330 lbs corn needed**

Double check your answer:

**170 lbs of soybean meal + 330 lbs of corn = 500 lb ration**



### References:

- <https://breeds.okstate.edu/goats/>
- <https://afs.ca.uky.edu/livestock/goat/skeletal>
- <https://utia.tennessee.edu/ansc/wp-content/uploads/sites/7/2020/07/BeefFeedstuffsActivityPacket.pdf>
- <https://extension.psu.edu/animals-and-livestock/goats/production-and-management>