

Tennessee 4-H Sheep Project

Advanced





GENERAL INDUSTRY AND TERMINOLOGY

Outcome: Define the following terms: animal welfare, animal rights, public perception, animal behavior, gregarious, anthropomorphism.



EXPLORE: Step Out Activity

- Explore the terms listed above in the outcome. Research the terms on the internet
- Make and complete a table using the above terms
- Take the *Terms Challenge* on the next page

Term	Definition	Used in a Sentence
Animal welfare		
Animal rights		
Public perception		
Animal behavior		
Gregarious		
Anthropomorphism		

Share your educational piece with at least one group (4-H Club, judging team, etc.).

I shared with the following groups:



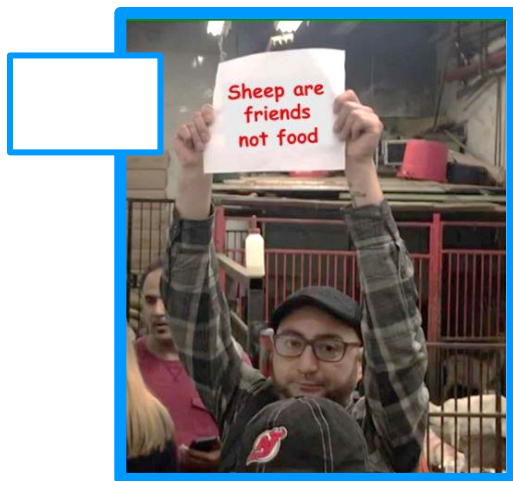
EXPAND & APPLY

How does this relate to every day life? How can you use this knowledge in the future?



GENERAL INDUSTRY AND TERMINOLOGY

Match the picture to the correct term listed below.



- A. animal welfare
- B. animal rights
- C. public perception
- D. animal behavior
- E. gregarious
- F. anthropomorphism



GENETICS AND SELECTION

Outcome: Identify and be able to explain the purpose for the following breeds: Cotswold, Dorper, Dorset Advantage, Finnsheep, Merino, Polypay, Shetland, Targhee.



EXPLORE: Step Out Activity

- Explore these breeds on this website: <https://breeds.okstate.edu/sheep/>
- Create flash cards for each breed listed, including both breed identification and purpose
- Take the *Breeds Challenge* on the next page

I created the following to share:

Share your educational piece with at least one group (4-H Club, judging team, etc.).

I shared with the following groups:

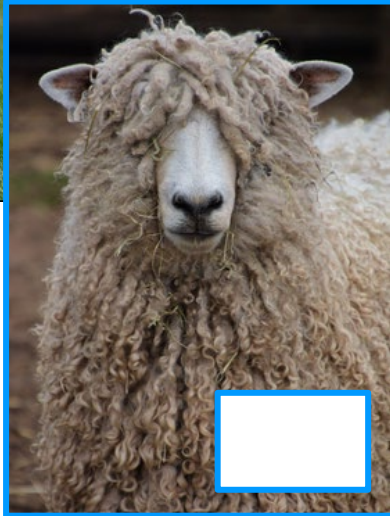
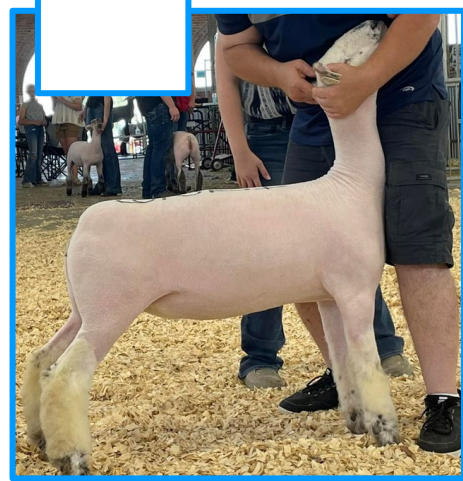


EXPAND & APPLY

How does this relate to every day life? How can you use this knowledge in the future?



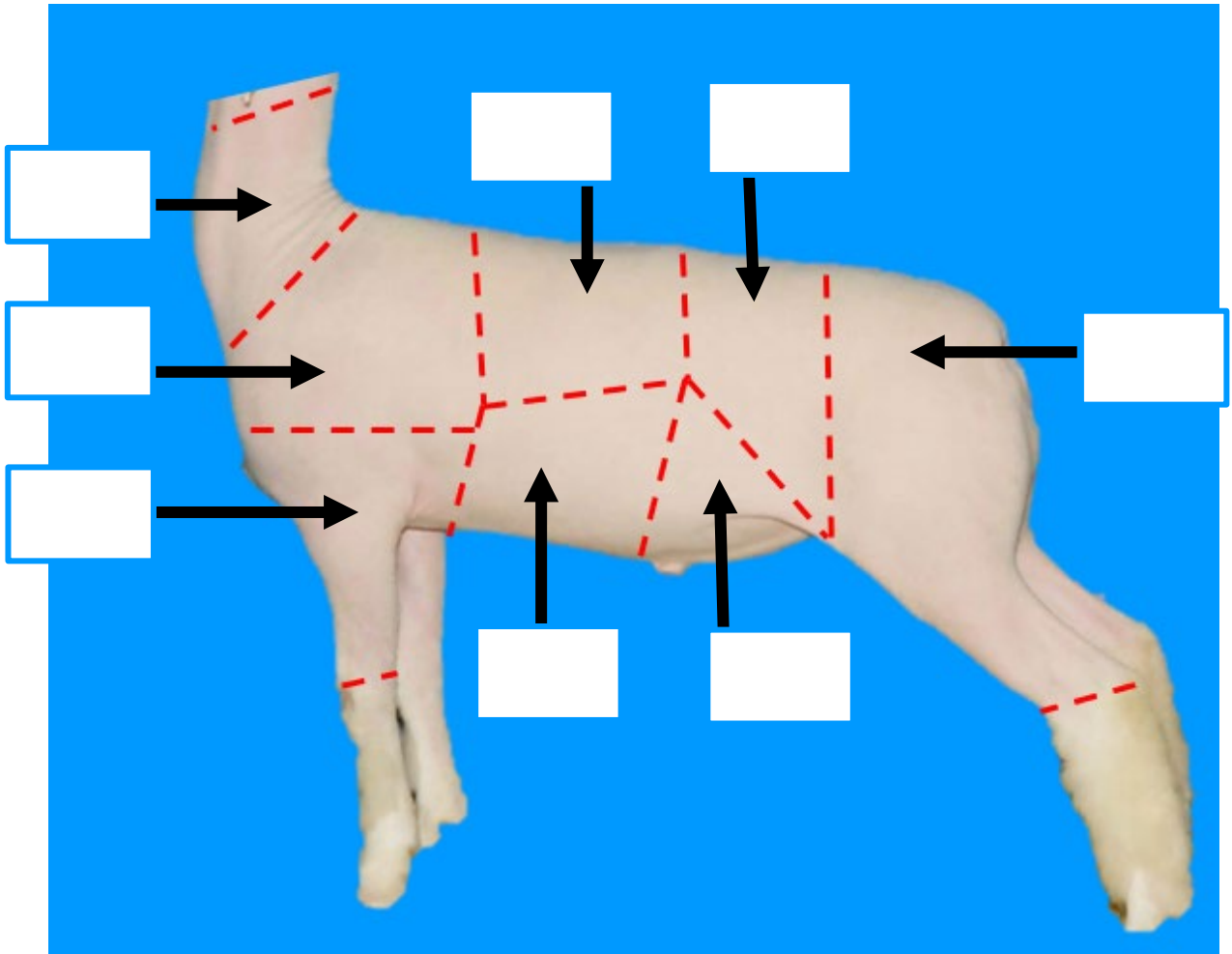
Match the picture to the correct breed listed below.



- A. Cotswold
- B. Dorper
- C. Dorset Advantage
- D. Finnsheep
- E. Merino
- F. Polypay
- G. Shetland
- H. Targhee



Match the wholesale cut to the location on the sheep.



- A. Breast
- B. Flank
- C. Foreshank
- D. Leg
- E. Loin
- F. Neck
- G. Rack
- H. Shoulder



CARCASS AND LAMB PRODUCTS

Outcome: Be able to identify all retail meat cuts from a lamb carcass and associate with the correct wholesale cut.



EXPLORE: Step Out Activity

- Research retail cuts of sheep using this website: <https://aggiemeat.tamu.edu/4-h-ffa-retail-identification-cuts/>
- Create a graphic with the location of all wholesale cuts of sheep
- Be able to match retail cuts to their respective wholesale cut
- Take the Retail/Wholesale Cut challenge on the next page

I created the following to share:

Share your educational piece with at least one group (4-H Club, judging team, etc.).

I shared with the following groups:

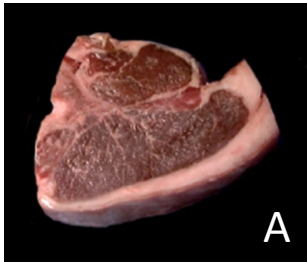


EXPAND & APPLY

How does this relate to every day life? How can you use this knowledge in the future?



Use the pictures to complete the table below.



Sample	Retail Cut	Wholesale Cut
A		
B		
C		
D		
E		
F		

Possible retail cut names

Denver Style Ribs
Arm Chop
Loin Chop

Rib Chop
Blade Chop
Square Cut

American Style Roast
Shank
Center Slice



NUTRITION AND FEEDING

Outcome: Complete a Pearson-Square ration formulation with feedstuffs.



EXPLORE: Step Out Activity

Learn more about the Pearson-Square method by visiting the following website:

<https://utia.tennessee.edu/anasc/wp-content/uploads/sites/7/2020/07/BeefFeedstuffsActivityPacket.pdf>

Using Pearson's Square, determine how many pounds of each feed are needed to formulate the feed ration. Round units following decimals to the nearest tenth.

Formulate 500 lbs. of a 21% CP ration using Soybean Meal (44% CP) and Corn (9% CP).

How many pounds of soybean meal will be used?

How many pounds of corn will be used?



EXPAND & APPLY

How does this relate to every day life? How can you use this knowledge in the future?



GENERAL INDUSTRY AND TERMINOLOGY

KEY

Match the picture to the correct term listed below.



F

E



D



A



B



C



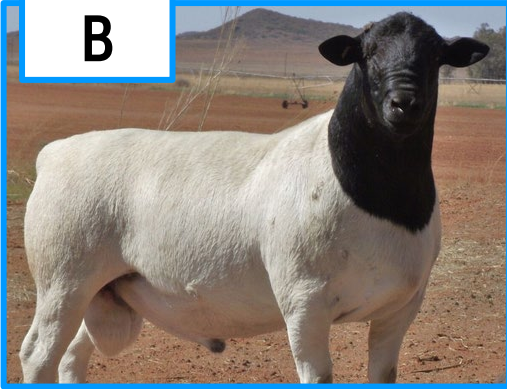
- A. animal welfare
- B. animal rights
- C. public perception
- D. animal behavior
- E. gregarious
- F. anthropomorphism



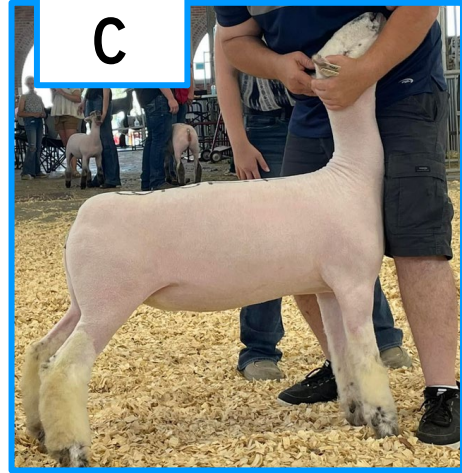
Match the picture to the correct breed listed below.

KEY

B



C



D



F



E



A



G



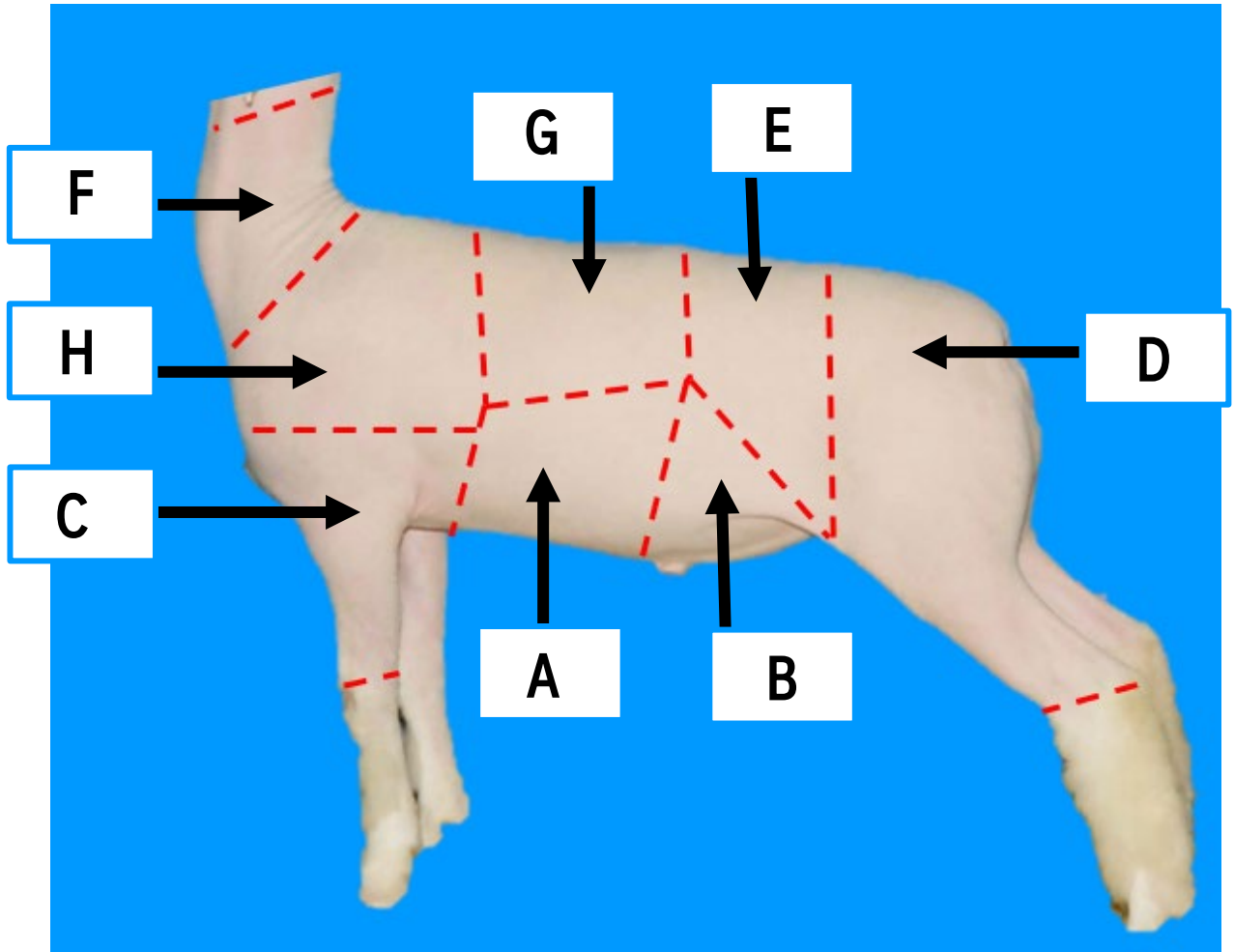
H



- A. Cotswold
- B. Dorper
- C. Dorset Advantage
- D. Finnsheep
- E. Merino
- F. Polypay
- G. Shetland
- H. Targhee



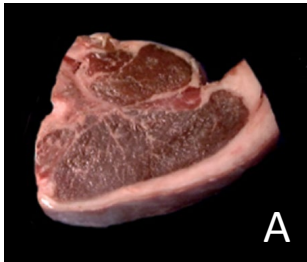
Match the wholesale cut to the location on the sheep.



- A. Breast
- B. Flank
- C. Foreshank
- D. Leg
- E. Loin
- F. Neck
- G. Rack
- H. Shoulder



Use the pictures to complete the table below.



Sample	Retail Cut	Wholesale Cut
A	Loin Chop	Loin
B	Arm Chop	Shoulder
C	Shank	Foreshank
D	American Style Roast	Leg
E	Denver Style Ribs	Breast
F	Rib Chop	Rack

Possible retail cut names

Denver Style Ribs
Arm Chop
Loin Chop

Rib Chop
Blade Chop
Square Cut

American Style Roast
Shank
Center Slice



NUTRITION AND FEEDING

Outcome: Complete Pearson-Square ration formulation with feedstuffs.



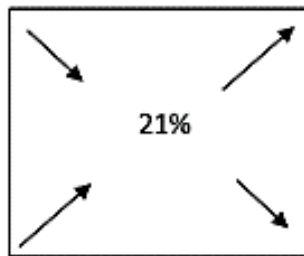
EXPLORE: Step Out Activity

Using Pearson's Square, determine how many pounds of each feed are needed to formulate the feed ration. Round units following decimals to the nearest tenth.

Formulate 500 lbs. of a 21% CP ration using Soybean Meal (44% CP) and Corn (9% CP).

Soybean Meal 44%

Corn 9%



12 parts
Soybean Meal

23 parts Corn
35 Total Parts

How many pounds of soybean meal will be used?

12 parts Soybean Meal/ 35 Total Parts = 34% from soybean meal
34% of 500 lbs. in ration = 170 lbs. of soybean meal needed

How many pounds of corn will be used?

23 parts Corn/35 total parts = 66% from corn
66% of 500 lbs. in Ration = 330 lbs. corn needed



EXPAND & APPLY

How does this relate to every day life? How can you use this knowledge in the future?